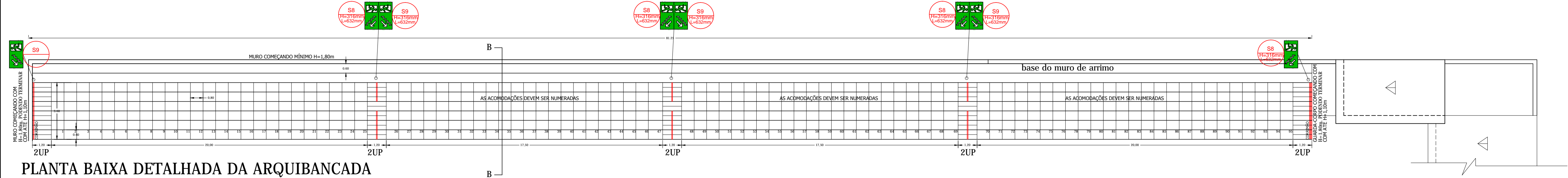
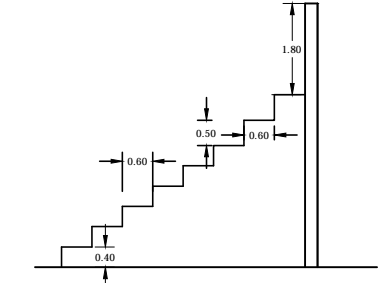


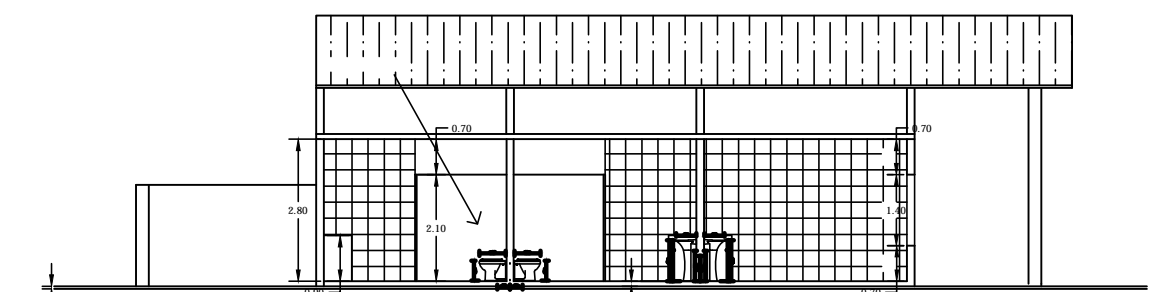
VISTA FRONTAL DA ARQUIBANCADA
Esc. 1:150



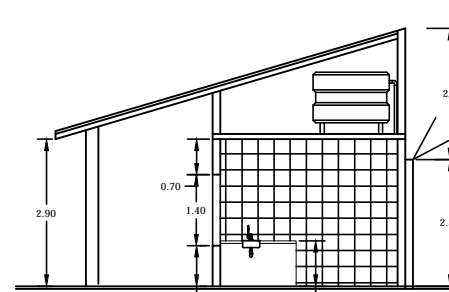
PLANTA BAIXA DETALHADA DA ARQUIBANCADA
Esc. 1:150



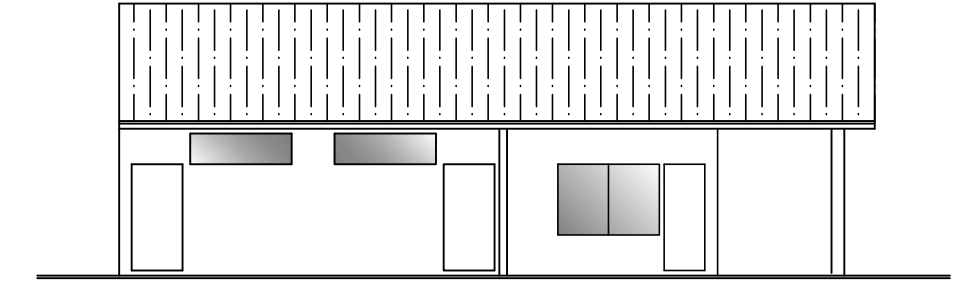
CORTE BB
Esc. 1:150



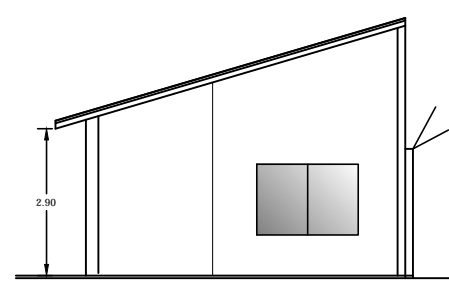
CORTE AA
Esc. 1:150



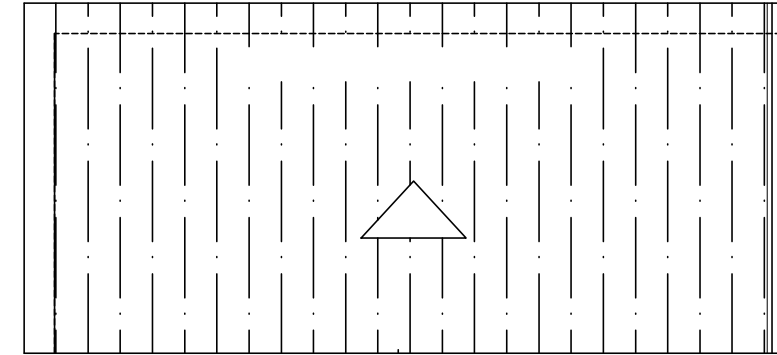
CORTE BB
Esc. 1:150



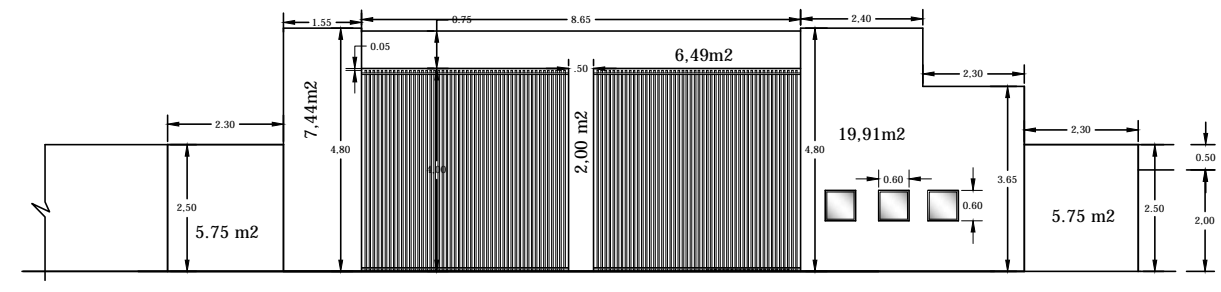
FACHADA PRINCIPAL
Esc. 1:150



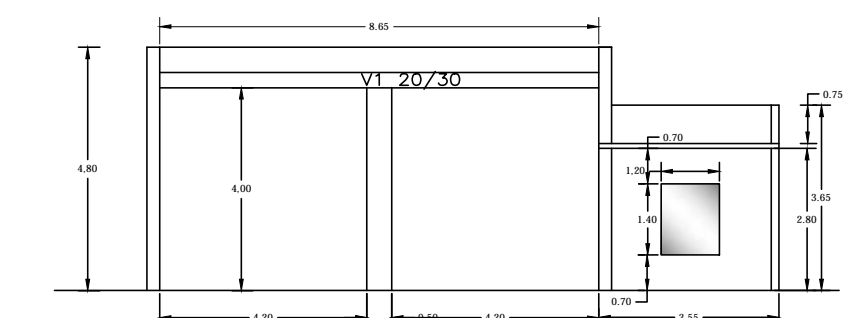
FACHADA SECUNDARIA
Esc. 1:150



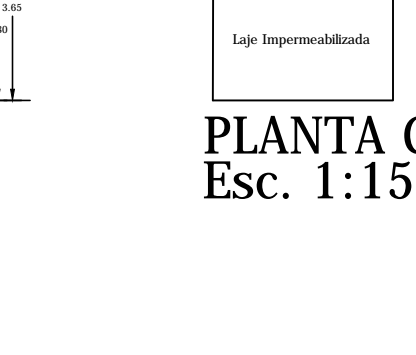
PLANTA COBERTURA
Esc. 1:150



FACHADA PRINCIPAL
Esc. 1:150



CORTE AA
Esc. 1:150



PLANTA COBERTURA
Esc. 1:150

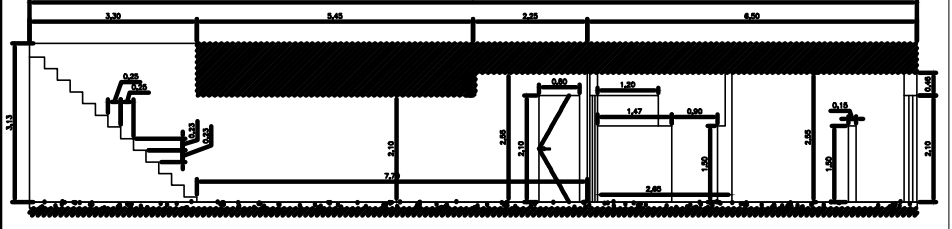


PLANTA COBERTURA
SALA MONITORAMENTO
Esc. 1:150

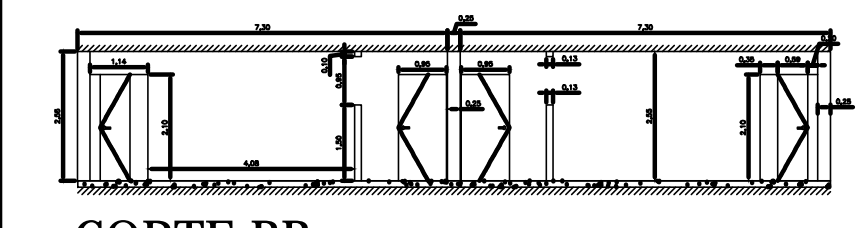
AREA EXTERNA DO CAMPO 77X93,95=7234,15m2

AREA DO CAMPO 71X82= 5.822 m2

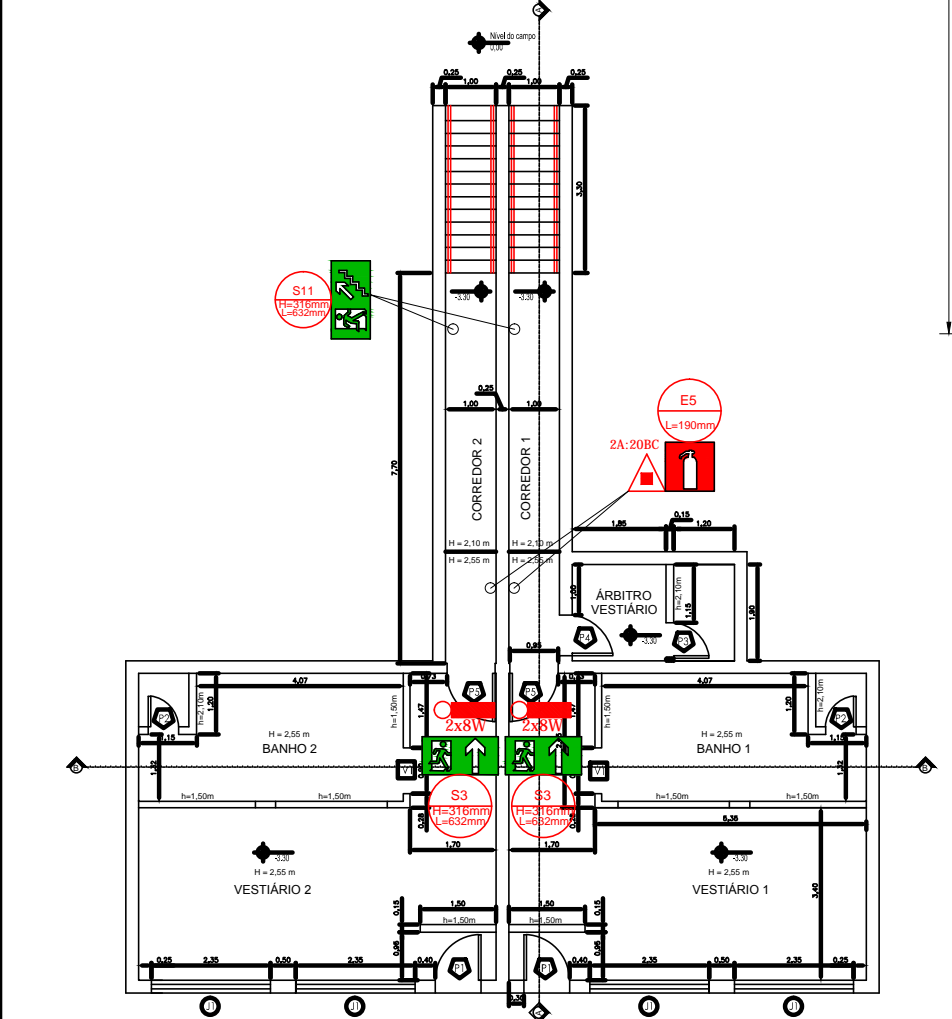
AREA PEDRISCO =7234,15-5.822=1.412,15X0,05=70,60 m3



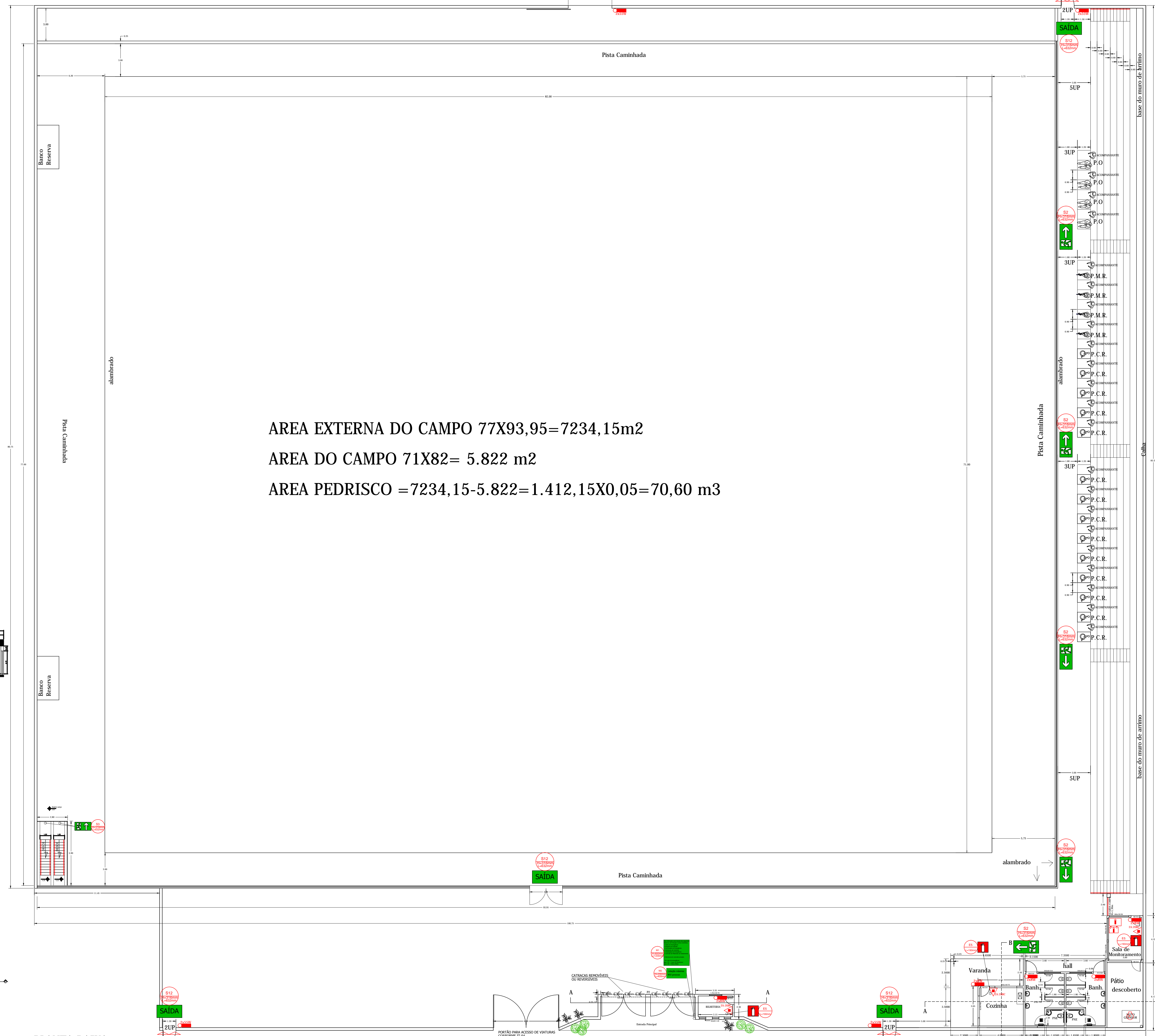
CORTE AA
Esc. 1:150



CORTE BB
Esc. 1:150



PLANTA BAIXA - SUBSOLO
Esc. 1:150



PLANTA BAIXA
Esc. 1:150

Soluções em Projetos Ltda. Rua Manoel de B. C. Oliveira, 561 - Al. Guandara Bairro: Jd. Guandara - CEP: 13.140-000		PROJETO TÉCNICO DE SEGURANÇA CONTRA INCÊNDIO E PÂNICO	
Ocupação: F - REUNIÃO DE PÚBLICO - F 3 - ESTÁDIO - 150MJ/m²		Folha: 02/02	
Proprietário: PREF. MUNICIPAL DE IBITIURA DE MINAS		HUGO CARVALHO P. RAMALHO	
CPF/CNPJ: 18.178.962/0001-09		CREA: SP 5063415025-D	
Endereço: RUA ANTÔNIO PINTO DE CARVALHO, S/ N°		PREF. MUN. DE IBITIURA DE MINAS	
Bairro: CENTRO		CNPJ: 18.178.962/0001-09	
Cidade: IBITIURA DE MINAS/ MG		MAIO/2016	
Área do Lote: 9.530,00m²		Área Utilizável: 388,80m²	
Área à Construir: 00,00m²		Área Total: 611,85m²	
Área Construída: 223,05m²			
CREA		BOMBEIRO	